


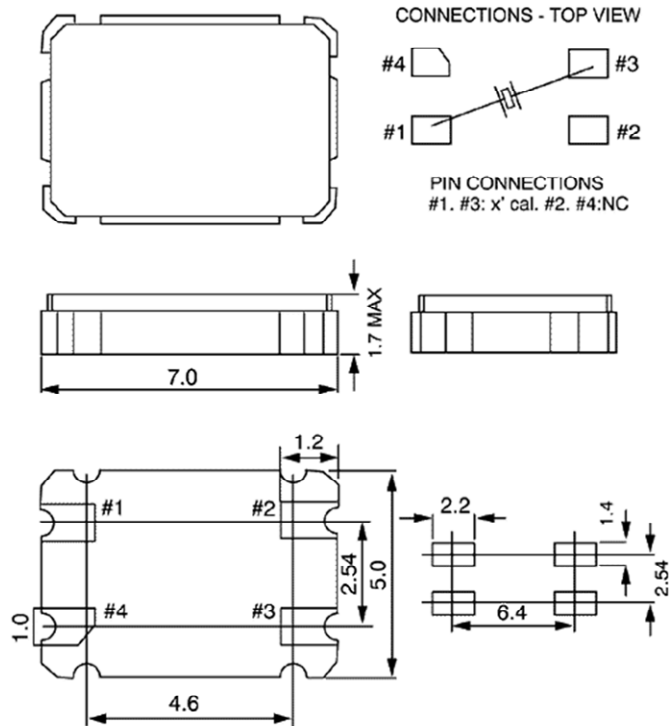


Product is compliant to RoHS directive 
and fully compatible with lead free assembly

VXC1 7 x 5 x 1.7mm 4 pads

Package:	C1 = 7 x 5 x 1.7 mm 4 pads
Frequency:	10 MHz to 100 MHz
Mode:	1 = Fundamental (10 to 40 MHz) 3 = 3 rd Overtone (40 to 100 MHz)
Stability Options	A = ±100 ppm -20°C to +70°C B = ±50 ppm -20°C to +70°C F = ±30 ppm -20°C to +70°C
Load Capacitance (CL):	0 = Series Resonant 1 = 16 pF 2 = 20 pF 4 = 18 pF 5 = 10 pF 6 = 30 pF
STD Calibration Tolerance	±30 ppm at +25°C Tolerances to ±10 ppm are available
ESR:	80 Ohms max.
Shunt Capacitance (Co):	7 pF max
Drive Level:	10 to 100 uW
Crystal Aging:	< 5 PPM/ 1st year
Standard Packaging:	Tape & Reel (1,000 pc Minimum)
Typical P/N:	VXC1-1B2-28M224 C1 = 7 x 5 x 1.7 mm 4 pads 1 = Fundamental (10 to 40 MHz) B = ±50 ppm -20°C to +70°C 2 = 20 pF

Package Drawing (mm)



Typical Reflow Profile

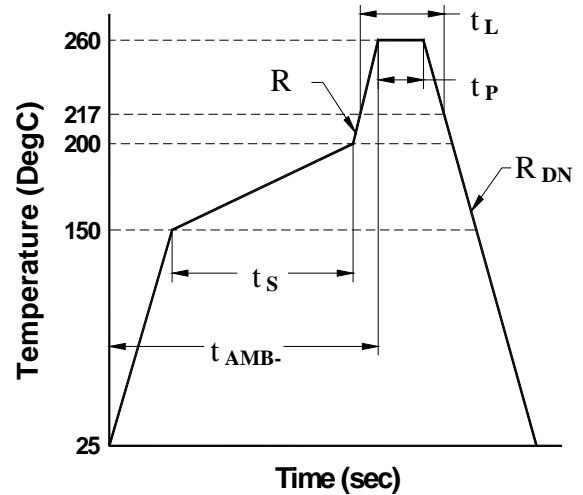


Table 1. Reflow Profile (IPC/JEDEC J-STD-020B)

Parameter	Symbol	Value
PreHeat Time	t_s	60 sec Min, 200 sec Max
Ramp Up	R_{UP}	3 °C/sec Max
Time Above 217 °C	t_L	60 sec Min, 150 sec Max
Time To Peak Temperature	t_{AMB-P}	480 sec Max
Time At 260 °C (max)	t_P	10 sec Max
Time At 240°C (max)	$tp2$	60 sec Max
Ramp Down	R_{DN}	6 °C/sec Max

For Additional Information Please Contact:



USA: Vectron International • 267 Lowell Road, Hudson, NH 03051
 • Tel: 1-88-VECTRON-1 • Fax: 1-888-FAX-VECTRON
EUROPE: Landstrasse, D-74924, Neckarbischofsheim, Germany •
 Tel: 49 (0) 7268 8010 • Fax: 49 (0) 7268 801281
ASIA: Vectron Asia Pacific Sales 1F~2F, No.8 Workshop No.308 Fenju Rd., WaiGaoQiao
 Free Trade Zone, Pudong New Area Shanghai, China 200131
 •Tel: 8621 50480777 • Fax: 8621 50481881

Vectron International reserves the right to make changes to the product(s) and/or information contained herein without notice. No liability is assumed as a result of their use or application. No rights under any patent accompany the sale of any such product(s) or information.
 Rev 1: 07/21/2006